



Custodial Specialist Lighting Solutions

British Manufacturer of Ministry of Justice Approved
Specialist Anti-Ligature, High-Impact & Vandal-Resistant Luminaires



LIGHT  **HEAD**
YEARS



Our Values

For decades our core values have comprised of continuous investment, innovation and quality assurance, together with a commitment to high levels of customer service. Through this we have built a reputation as a trusted UK partner to manufacture and deliver the best quality specialist lighting fixtures and systems available.

Light Years Ahead provide personal and proactive technical support to architects, lighting designers as well as M&E consultants and contractors, following each project from conception through to design, manufacture and final completion.

As part of Daro Group, we benefit from the wider support of the Group's central resources such as strategic planning, sales & marketing, financial management, leadership and on-going investment.

Our portfolio of projects includes prisons, police stations, law courts and secure mental healthcare facilities not only in the UK and Ireland but also beyond our borders in Europe, the Middle East, New Zealand and Australia.

Our thinking and decisions are guided by the key Group philosophy of:

you win, we win.

Working With Us

LYA became part of the wider Daro Group in 2017 and benefits from a range of resources and symbiotic relationships for the benefit of organisations that we work with.

Working with us you can be assured that we wholeheartedly listen to and understand your exact needs. Once we review your brief we're able to utilise our expertise to design, manufacture and deliver best-in-class products that match your budget.

Customer relationship is at the heart of everything we do. We target 100% on-time delivery, every time. We're able to achieve this by having robust, short supply chains and precise stock management. We aim to work to minimal lead times and can typically deliver within weeks of receiving an order.



Part of Daro Group



trusted and agile

We make working with us easy

01

Understand your needs

02

Help you to make an informed decision











03

Deliver

you win, we win.





Central Business Resources

-  Governance and leadership
-  Strategy and business planning
-  Continuous investment and improvement
-  Accreditations and compliance
-  Quality assurance
-  Finance
-  IT
-  Human resources
-  Environmental
-  Health and safety



Central Manufacturing Resources

-  Research and design facilities
-  CNC, welding and fabrication
-  Mechanical engineering
-  Electrical engineering
-  Assembly and finishing

Growing together with



Daro Group's central business and manufacturing resources bring a full suite of support services, enabling the companies within the group to focus on delivering their core areas of expertise; allowing them and their customers to thrive.

Comprising of three production sites and over 50 staff, the combined strength of the group allows us to deliver on our core value:

You win, we win.

Value Expertise

01



Design

02



Manufacture

03



Short Supply Chain

04



Delivery

05



**Excellent Service
as Standard**

The Team



Mervyn Douglas
Group Managing Director

Mervyn joined Daro in 2016 bringing 20 years' experience in business and finance. His role is to lead the strategic direction of Daro, managing continuous investment in resources to enable people, businesses and the group to achieve their long-term objectives.



Lee McCarthy
Group Technical Director and
Lighting Business Leader

With 30 years in the lighting industry, Lee is responsible for leading the Lighting Businesses, mainly developing solutions for the custodial and mental health markets. Utilising his experience in lean manufacturing he drives continuous improvement across the Group.



Steve Shefford
Key Account Manager

Steve brings eight years' experience in the lighting industry plus five years in project management – giving him an excellent grasp of design, from concept to delivery. Working in conjunction with his colleagues, he develops and maintains relationships with architects, consultants, specifiers and contractors for custodial and healthcare lighting.



Suzanne Gunn
Key Account Manager

Suzanne brings over 25 years of experience in the lighting industry, possessing vast experience in Lighting Solutions. Her focus lies in building and maintaining strong relationships with distributors, contractors, and specifiers for custodial and healthcare lighting. Suzanne's expertise assists clients in making well-informed decisions; ensuring they receive exceptional service and support.



Luke Bowman
Marketing Manager

Luke joined Daro in 2022 having worked in marketing and design for 12 years. He brings a wealth of industry experience from various sectors including branding, campaign and event planning. His main responsibility is to oversee marketing strategy and implementation for Lighting.



Sarah Pennock
Group Finance Director

Sarah is Group finance director, overseeing the accounts and is a qualified member of the Chartered Institute of Management Accountants (CIMA). Since joining Daro in 2004 Sarah's role has continuously developed to now encompass overseeing group IT, property services as well as finance and human resources.



Lisa Price
Project Manager

Lisa joined the lighting industry in 2014. Her product and sector knowledge, along with her exceptional organisational skills are hugely valuable to the team and the successful delivery of our projects. Lisa also assists in all aspects of the process, from design right through to quoting and specifying for application.



Ian Bianchi
Account Manager

Ian joined the Group in 2001 and has experience of almost every facet of the business, with expertise in vacuum forming. Since 2017 he has been account manager, ensuring Light Years Ahead remains trusted and agile.



Darrell Jamieson
Group Manufacturing Lead

Darrell joined the Group in 2008 and has touched almost every aspect of the business. His extensive experience has given him the foundation to excel in his role as Head of Group Manufacturing Processes.



Matt Pilgrim
Group QHSE Lead

Matt joined Daro in 2021, bringing 19 years' engineering experience and leads Quality, Health & Safety and Environmental standards across the Group. Matt is NEBOSH and IOSH qualified, ISO 9001, 14001, 45001 and 31000 trained as well as holding a Green Belt in Six Sigma.

What We Do

We serve organisations and establishments in the low, medium and high secure services. Light Years Ahead's industry experts specialise in the design and provision of British manufactured, Ministry of Justice approved anti-ligature, high-impact and vandal-resistant lighting for the demanding conditions of custodial, mental healthcare and high-risk sectors.

LYA's custodial lighting products have been designed and manufactured following consultation with HMPPS and are typically installed in consultation rooms, interview rooms, custody corridors, holding cells, bathroom areas, canteens and recreational areas.

Our products are manufactured to meet or exceed all official standards in their respective fields and to reduce whole life costs. Our entire range is designed and manufactured at our dedicated plant in East Anglia close to the M11 with easy access to the UK's network of transport links.

Since 1997 we have been trusted to deliver the highest quality luminaires, lighting control systems, retrofit lighting and bespoke lighting by public and private sectors.

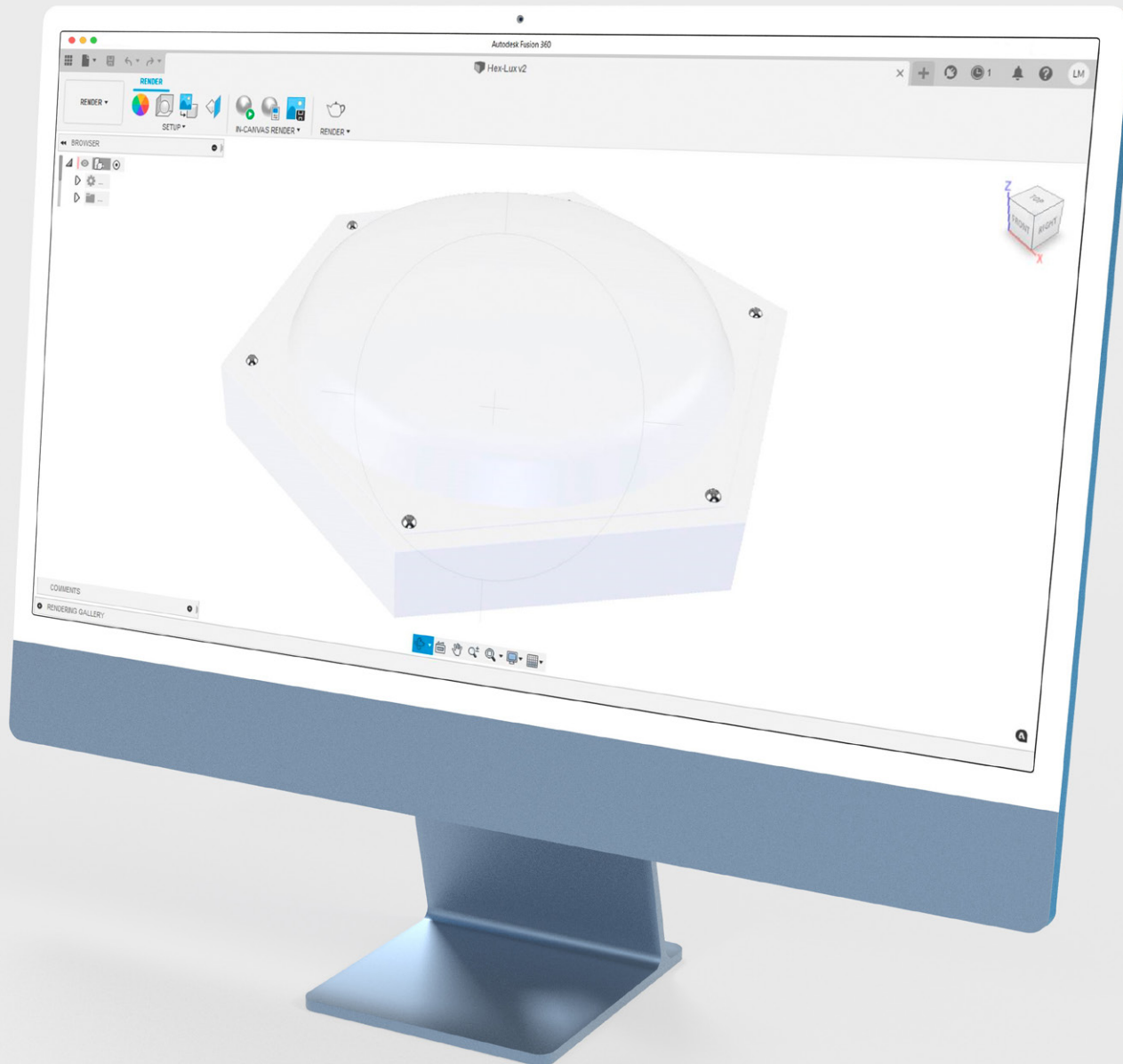
Warranty

All metalwork and lenses for our MoJ approved products are guaranteed against breakage, through vandalism, for 10 years and all products in our range come with a five-year warranty for LEDs and electronic drivers. Most of our products also have a five-year warranty for metalwork and lenses.

We can offer extended warranty for LEDs and drivers on some products. Emergency products come with a one-year warranty for NiCD or NiMh batteries and three-year warranty for LiFePO4 batteries.

LYA provides personal and proactive technical support to all clients, including mechanical and electrical engineering consultants and contractors, following each project from conception, design and manufacture to final completion.



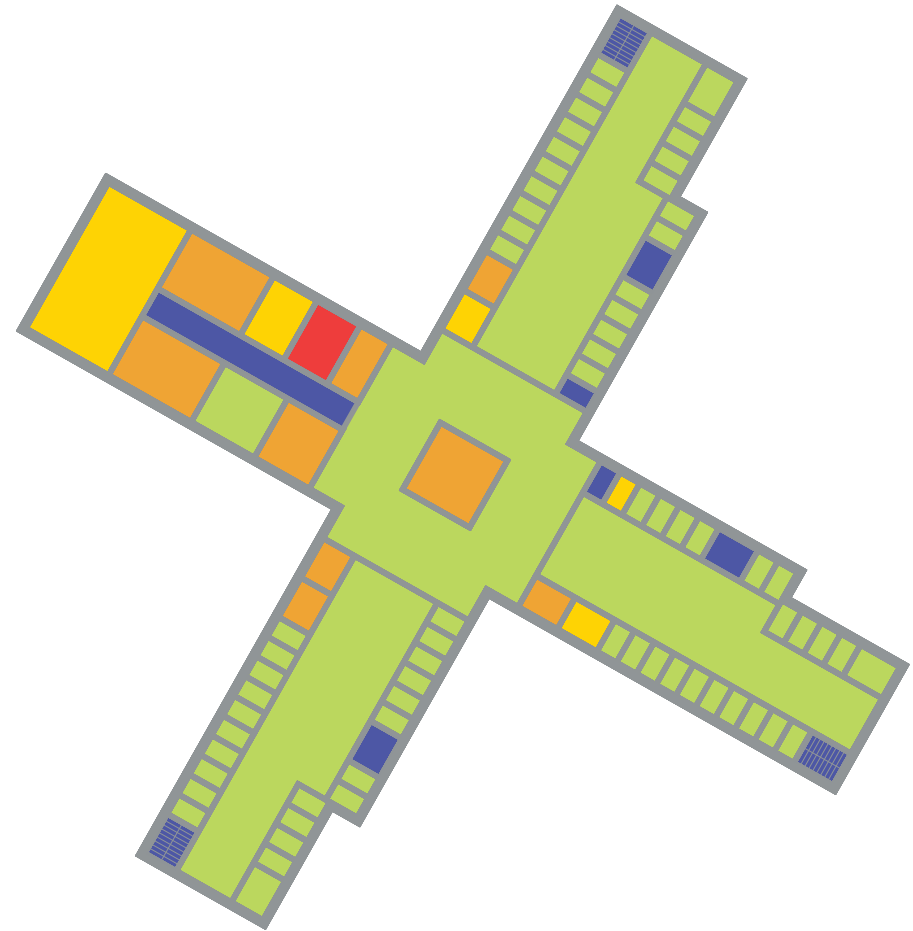


LYA provides personal and proactive technical support to all clients, including mechanical and electrical engineering consultants and contractors, following each project from conception, design and manufacture to final completion.

The LUX Guide

Lux (Latin for light) is the measure of the intensity or brightness of light that hits or passes through a surface, as perceived by the human eye. It specifically measures the luminous flux per square metre. One lux is the amount of illumination provided when one lumen is distributed over an area of one square metre.

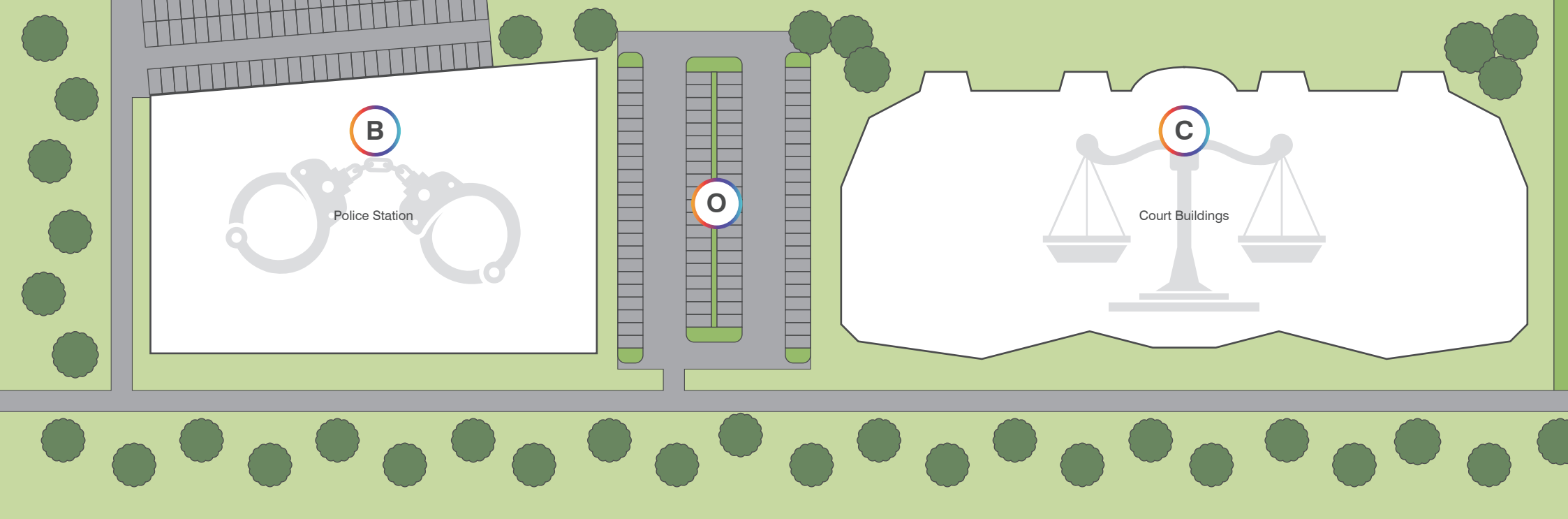
The good practice guide to support rehabilitation to provide a safe, secure and decent prison estate as part of the Prison Estate Transformation Programme, guides the LUX levels in each area of a prison estate.



LUX

Handy Guide to LUX

Application	Working Height	Uniformity	LUX Level
Ancillary Areas - Plant Rooms	Floor	> 0.4	200 LUX
Communal Areas	Floor	> 0.6	200 LUX
Corridors and Stairwells	Floor	> 0.4	100 LUX
Education	0.75m	> 0.6	400 LUX
Exterior	Floor	minimum of	3, 5 and 10 LUX
Healthcare	0.75m	> 0.6	200 or 325 LUX
Kitchens	0.9m	> 0.6	325 LUX
Multi Faith	Floor	> 0.6	200 LUX
Non-Custody - Offices	0.75m	> 0.6	325 LUX
Reception	Floor	> 0.6	325 LUX
Safer Cells	1.5m	> 0.5	200 LUX
Showers	Floor	> 0.6	100 LUX
Sports Hall	Floor	> 0.7	400 LUX
Standard Cells	1.5m	> 0.5	200 LUX
Toilets	Floor	> 0.4	100 LUX
Video Conference	0.75m	> 0.8	500 LUX
Visitor Centre	Floor	> 0.6	325 LUX
Workshops	0.9m	> 0.6	300 or 325 LUX
Emergency Lighting	Floor	minimum of	1, 3 and 15 LUX



Site Plan of Applications

A	Open Prisons (Cat D)	Page 16	J	Multi Faith	Page 30
B	Police Station	Page 18	K	Kitchens	Page 31
C	Court Buildings	Page 20	L	Workshops/Sports Halls	Page 32
D	Standard Cells	Page 22	M	Healthcare	Page 33
E	Safer Cells	Page 24	N	Ancillary Areas/Non-Custody	Page 34
F	Communal Areas, Corridors and Stairwells	Page 26	O	Exterior	Page 35
G	Showers/Toilets	Page 27	P	Emergency Lighting	Page 36
H	Video Conference/Reception and Visitor Centre	Page 28	Q	Lighting Controls	Page 37
I	Education	Page 29	R	LED Retrofit Upgrades	Page 38



Open Prisons (Cat D) & Approved Premises



Whilst there is no official guidance for open prisons or approved premises the need for a robust light should still be considered.

Luminaires in these environments must still be 'safe' for service users, as well as being robust, impact resistant and have ligature- resisting features and also stop concealment of non authorised items.

LED lighting is increasingly being recognised as beneficial to the well-being of detainees, and in an open prison environment a more domestic feel to the lighting and lux levels can have a positive impact on levels of anti-social behaviour.

We are happy to recommend, guide and assist with lighting design for these projects.

Attributes

- ✓ Efficient LED – we recommend >95lm/W
- ✓ LED and driver life >50,000 hours
- ✓ Recommended CRI >80 and CCT 3000K or 4000K
- ✓ >IK10 (20J)
- ✓ IP54
- ✓ Tamper-resistant screws
- ✓ Easy maintenance for minimum disruption
- ✓ Minimise whole life costs

Recommended Fittings for Cells



Enduralux



Como Anti-Vandal



Guardian Bed Head



Iris Anti-Vandal

Custodial

As a leading specialist designer and manufacturer of fully compliant Ministry of Justice custodial lighting we understand the exacting needs of your demanding environment.

Working proactively with all parties from clients to contractors we are pleased to contribute to the successful outcome of HM Prison and Probation Service's (HMPPS) commitment to 'providing a safe, secure and decent prison estate' as part of the Prison Estate Transformation Programme.

Understanding that well-being and rehabilitation are important elements of the custodial experience our safety considerations are balanced with design and development for future needs.

Light Years Ahead (LYA) works with you to ensure that standard and safer-cell lighting does not contribute to abuse or self-harm and that fittings cannot result in burns or other accidents or incidents.



“

The experience we had with LYA, part of Daro Group, especially during the challenging pandemic, was outstanding. Every change that was made throughout the delivery period was met with “how can we” and they did, on time, every time. Being able to trust in their agility contributes to our enduring partnership with them.

A client regarding a recent major project

”

Police Custody Suites and Non-custodial Areas

LYA luminaires comply with official guidance for police stations, magistrates' courts, crown courts, prisons, immigration centres, holding cells and any buildings that require a detention facility.

We understand luminaires in these environments must be 'safe' for detainees, as well as being robust, having high impact resistance and an anti-ligature design.

LED lighting is increasingly being recognised as being beneficial to the well-being of detainees, and in a custodial environment, have a positive impact on levels of anti-social behaviour.

Lighting for police custody suites should follow the National Police Estates Group (NPEG) Police Custody Design Guide (STD-Z-DG-078) and we have used this for guidance to lux levels on the next page. Uniformity is important and should generally be >0.6 or higher for task areas.

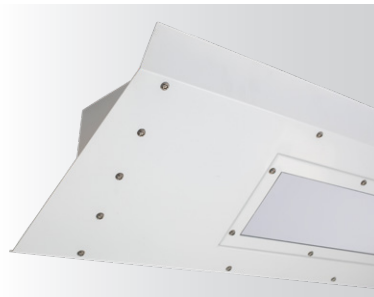
Attributes

- ✓ Efficient LED - we recommend >95lm/W
- ✓ LED and driver life >50,000 hours
- ✓ Recommended CRI >90 and CCT 4000K
- ✓ >IK11 (50J)
- ✓ IP65
- ✓ Tamper-resistant screws
- ✓ Easy maintenance for minimum disruption
- ✓ Minimise whole life costs

Recommended Fittings for Cells



**Protectalux X Linear
(Police Cell)**



Protectalux X Cornice

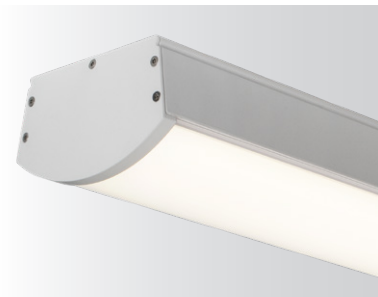


Protectalux XS Surface



**Protectalux X Bulkhead
(Police Cell)**

Recommended Fittings



Resistalux Surface



Sirius Low Glare



Como Anti-Vandal



Enduralux T Low Glare



Como Medium



Asti

In addition to these luminaires we can offer fixtures for other custodial and non-custody areas from our extensive range.

Police Custody Suite - Handy Guide to LUX

Application	LUX Level
Breathalyser Room	300 LUX
Cells - Cleaning/Inspection	300 to 450 LUX
Cells - Daytime	150 to 250 LUX
Cells - Night Inspection	minimum 15 LUX
Charge Room (Dimmable)	300 LUX
Charge Room Desk Floor	450 LUX
Corridor - Custody	150 to 250 LUX
Corridor - Non-custody	100 LUX
External Walkways	7 LUX
Holding Rooms	150 to 250 LUX
Interview Rooms / Closed Visits	300 LUX
Medical Room	350 to 450 LUX
Offices	300 LUX
Photo / Fingerprint Area	350 to 500 LUX
Plant Room	200 LUX
Search Room	350 LUX
Stores	100 LUX
Toilets	100 LUX
Emergency Lighting	1, 3 and 15 LUX

Crown & Magistrate Courts and Non-custodial Areas

LYA luminaires comply with official guidance for magistrates' courts and crown courts, holding cells and any buildings that require a detention facility.

We understand luminaires in these environments must be 'safe' for defendants, as well as being robust, have high impact resistant and be to an anti-ligature design.

Holding cells in court custody areas should follow the MOJ safer cell standard (STD/E/SPEC/022). We have developed specific luminaires for use in these areas that are easy to install, in new or refurbishment projects, and are available stock or short lead times to minimise disruption.

For court custody areas all rooms and holding cells should be lit to 15 lux in emergency directly below the luminaire.

Attributes

- ✓ Efficient LED – we recommend >95lm/W
- ✓ LED and driver life >50,000 hours
- ✓ Tested to MOJ Standards
- ✓ >IK11 (50J)
- ✓ IP65
- ✓ Tamper-resistant screws
- ✓ Easy maintenance for minimum disruption
- ✓ Minimise whole life costs

Recommended Fittings for Cells



**Protectalux X Linear
(Court Cell)**



Protectalux XS Cornice

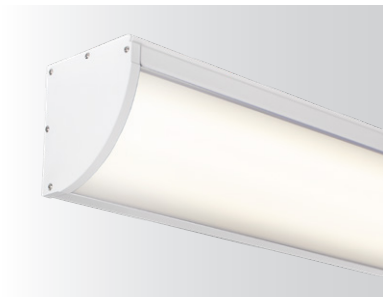


Protectalux XS Surface



**Protectalux X Bulkhead
(Court Cell)**

Recommended Fittings



Resistalux Cornice



Sirius Low Glare



Iris Anti-Vandal



Protectalux T Cornice



Iris Standard



Asti Recessed Panels

In addition to these luminaires we can offer fixtures for other custodial and non-custody areas from our extensive range.

Crown & Magistrate Courts - Handy Guide to LUX

Application	LUX Level
Cells	300 LUX
Circulation - Custody	200 LUX
Circulation - Non-Custody	175 to 200 LUX
Custody Areas	300 to 500 LUX
Hearing Rooms/Court Suites	500 LUX
Lounges/Library	350 LUX
Medical Room	500 LUX
Meeting/Interview Rooms	350 to 500 LUX
Offices/Control Rooms	350 to 500 LUX
Plant Room	200 LUX
Private Spaces	350 LUX
Reception	300 LUX
Refreshment Areas	500 LUX
Storage Areas	200 LUX
Task-Based	500 LUX
Toilets/Changing Rooms	125 to 175 LUX
Waiting Areas	300 LUX
Wellbeing/Contemplation	300 LUX
Emergency Lighting	1, 3 and 15 LUX

Standard Cells



Our independently tested luminaires for standard cells are designed and manufactured on site at our dedicated plant in East Anglia and are approved by HMPPS to STD/E/SPEC/021. They are available in a variety of sizes and can be ceiling or wall mounted.

All fittings are vandal-resistant with reduced-ligature properties and manufactured and tested to BS EN 60598. For wet areas fittings must be a minimum IP54 rating or for high traffic areas consider IP65.

Prior to independent testing our in-house testing goes beyond the recommended IK10 20 joules.

Independent tests ensure that it is not readily possible to attach a ligature using a standard shoelace, string, or strip of

bed-sheet material, or to create anchor points using wire or large metal paper clip that would assist in attachment of those materials. The test is repeated during impact testing and utilising a 20kg weight.

The flammability and puncture test utilises a disposable cigarette lighter or matches to apply heat to a single point on the diffuser for 30-seconds. Followed by an attempt to puncture the diffuser with a plastic pen or pencil which is continued for up to eight minutes along with the application of abrasion using a 10mm coach bolt.

For impact testing implements such as the heel of a boot, a broom handle or a metal bed head frame are used with increasing levels of severity to test our material's performance to the required tolerance.

Attributes

- ✓ Efficient LED – we recommend >95lm/W
- ✓ Lamp life >50,000 hours
- ✓ Maximum size 1000x150x110mm
- ✓ Average light output of 200 lux measured on a level plane at a point 1500mm immediately below its centre
- ✓ >IP40 – we recommend IP54
- ✓ 3000K
- ✓ Tamper resistant screws
- ✓ Night light minimum 10 lux, maximum 15 lux measured at bedhead position
- ✓ Metal body
- ✓ Polycarbonate opal lens – 50% obscuration
- ✓ White polyester powder coated paint finish with zinc pre-coat
- ✓ Shower niche 150 lux

Quality assurance including ISO 9001:2015 and ISO 14001:2015, reduced lead times and an improved competitive position.

Products



Enduralux X Linear IP54, IK16 (150J)

- Reduced ligature linear (975mm or 1275mm)
- Opal polycarbonate lens, 50% obscurity
- LED 3000K
- Night Light
- Approved with the HMPPS (formerly NOMS) specifications STD/E/SPEC/021
- >95lm/W Part L compliant



Protectalux S Cornice IP65, IK16 (150J)

- Reduced ligature cornice system, optional cableway
- Polycarbonate lens, 50% obscurity without liner
- LED 3000K
- >95lm/W Part L compliant



Protectalux S Surface IP65, IK16 (150J)

- Reduced ligature linear and bulkhead surface fittings
- Polycarbonate lens, 50% obscurity with opal liner
- LED 3000K
- >95lm/W Part L compliant



Enduralux X Bulkhead IP54, IK14 (100J)

- Reduced Ligature square bulkhead
- Opal polycarbonate lens, 50% obscurity
- LED 3000K
- Approved with the HMPPS (formerly NOMS) specifications STD/E/SPEC/021
- >95lm/W Part L compliant
- Smaller version and Wifi Access Point cover available

Safer Cells



Our independently tested anti-ligature, vandal-resistant luminaires for safer cells are designed and manufactured on site at our dedicated plant in East Anglia and are approved by HMPPS to STD/E/SPEC/022. They are available in a variety of sizes and the following mountings:

- Centre mounted cell luminaires for fixing to flat or vaulted ceilings
- Cornice luminaires incorporating spare wire-ways
- Ceiling or wall mounted luminaires for cell toilet recesses and bedhead applications

Prior to independent testing our in-house testing goes beyond the recommended IK10 20 joules.

Independent tests ensure that it is not readily possible to attach a ligature using a standard shoelace or string or to create anchor points using wire or large metal paper clip that would assist in attachment of those materials. The test is repeated during impact testing and utilising a 20kg weight.

The flammability and puncture test utilises a disposable cigarette lighter or matches to apply heat to a single point on the diffuser for 90-seconds. Followed by a 30-second attempt to puncture the diffuser with a coach bolt (M10x150mm) along with the application of abrasion using a 10mm coach bolt. The process of applying heat and attempting to puncture the diffuser is repeated for up to eight minutes.

For impact testing implements such as the heel of a boot or steel toecap, a broom handle or a metal bed head frame are used with increasing levels of severity to test our material's performance to the required tolerance.

Attributes

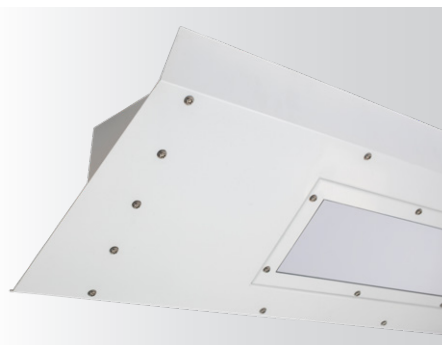
- ✓ Independently tested and approved by HMPPS (MoJ) – to STD/E/SPEC/022
- ✓ Vandal resistant
- ✓ Ligature free
- ✓ Manufactured and tested to BS EN 60598
- ✓ LED we recommend >95lm/W
- ✓ Life greater than >50,000 hours
- ✓ Maximum size 1000x150x110mm
- ✓ Average light output of 200 lux
- ✓ We recommend IP65
- ✓ 3000K
- ✓ Tamper resistant screws
- ✓ Nightlight min 10 lux, maximum 15 lux measure at bed head position
- ✓ Body – metal
- ✓ Lens – polycarbonate opal, LEDs should not be seen (50% obscurity)
- ✓ White polyester finish with zinc pre-coat
- ✓ Shower niche 150 lux

Products



Protectalux X Linear IP65, IK22 (300J)

- Ligature free linear (815mm or 1415mm)
- Polycarbonate lens, 50% obscurity with opal liner
- LED 3000K
- Night Light
- Approved with the HMPPS (formerly NOMS) specifications STD/E/SPEC/022
- >95lm/W Part L compliant



Protectalux X Cornice IP65, IK18 (200J)

- Ligature free Cornice system with optional cableway
- Polycarbonate lens, 50% obscurity with opal liner
- LED 3000K
- Night Light
- >95lm/W Part L compliant



Protectalux XS Surface IP65, IK20 (250J)

- Ligature free linear and bulkhead surface fittings
- Polycarbonate lens, 50% obscurity with opal liner
- LED 3000K
- Night Light
- >95lm/W Part L compliant



Protectalux X Bulkhead IP65, IK22 (300J)

- Ligature free round bulkhead
- Polycarbonate lens, 50% obscurity with opal liner
- LED 3000K
- Night Light
- Approved with the HMPPS (formerly NOMS) specifications STD/E/SPEC/022
- >95lm/W Part L compliant
- Smaller version and Wifi Access Point Cover available

Communal Areas



The Estates Directorate states that luminaires in any area accessible to prisoners or defendants and any unsupervised areas accessible to prisoner visitors (such as toilets and baby changing facilities) must be -

- ✓ **Vandal resistant** with impact resistance of at least IK10 - We would recommend IK11 (50J) or greater
- ✓ **Tamper resistant exposed fixings** Torx 20 (minimum size) type with mushroom head (i.e. shallow head) and centre pin
- ✓ **IP rating recommended of IP44 or higher.**

Communal areas such as corridors, stairwells, circulation areas, laundry and drying room, entrance lobbies, serveries, TV, activity & group rooms, stores, holding areas and dining rooms.

Recommended Fittings



Protectalux T Cornice



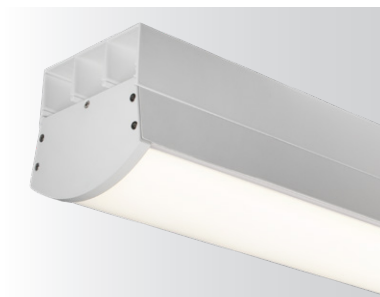
Enduralux T



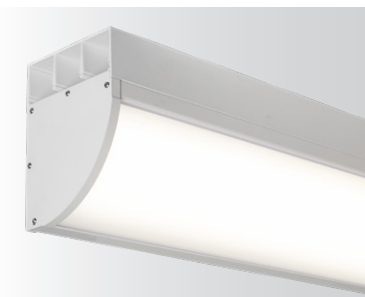
Iris Anti-Vandal



Enduralux T Square



Resistalux Surface with Cable Way



Resistalux Cornice with Cable Way



Sirius Surface or Recessed



Como Anti-Vandal



Showers and Toilets



For communal showers and toilets products need to be IP rated and vandal resistant. When they are installed above the shower area the requirement is for IP65 and anti-ligature fittings.

Recommended Fittings



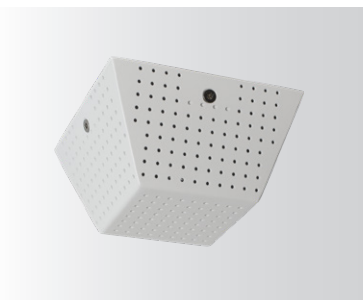
Iris Anti-Ligature



Protectalux Low Profile



Ventilation Grille



Smoke Detector Cover

Video Conference and Reception Visitor Centre

Congruent with HMPPS good practice guidelines to support rehabilitation, good quality visits in a relaxed environment make a significant contribution to prisoner well-being.

Appropriate lighting plays an important role in creating an environment that encourages family visits, supporting the overall aims of rehabilitation.

For video conferencing visits or court appearances the use of low glare - low flicker and good CCT and CRI is important. A vandal resistant and reduced ligature product is also required.

Video Conference Centre Recommended Fittings



Sirius Low Glare

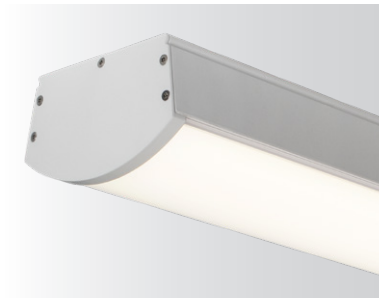


Protectalux T Low Glare

Reception Visitor Centre Recommended Fittings



Como Anti-Vandal



Resistalux Surface

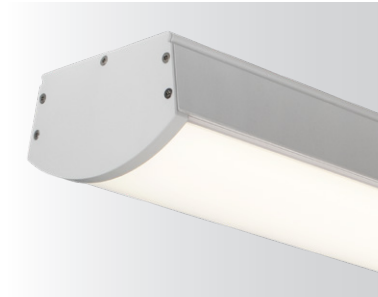


Education Rooms



Education lighting should provide a minimum illumination of 400 lux on the working plane, we recommend reduced glare lighting. Uniformity is important and should be a minimum of 0.6. We also recommend the use of dimming control for certain room use such as music rooms. Presence and daylight sensors should be utilised if natural daylight is available. Emergency lighting should be a minimum of 1 lux.

Recommended Fittings



Resistalux Surface



Sirius Low Glare



Como Anti-Vandal



Protectalux T Low Glare

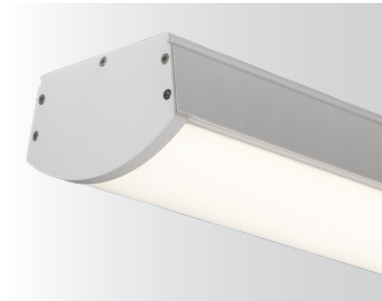


Multi Faith



Multi faith areas should be lit to a minimum of 200 lux, uniformity of 0.6 is acceptable, however, using lighting imaginatively in these areas could add to the overall décor which should be simple, but not merely functional, neutral or bland.

Recommended Fittings



Resistalux Surface



Sirius Surface or Recessed



Como Anti-Vandal



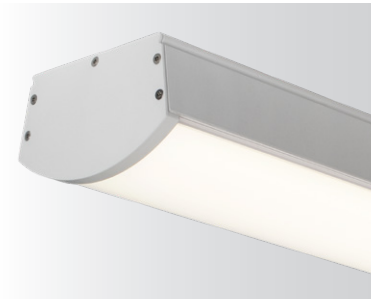
Iris Anti-Vandal

Kitchens



Kitchen lighting is provided to maintain a minimum illumination of 325 lux on the working plane and should be controlled by presence detection. For uniformity we recommend a minimum of 0.6 and, for emergency lighting, the kitchen could be deemed to be high risk so a minimum of 15 lux is required.

Recommended Fittings



Resistalux Surface



Sirius Surface or Recessed



**Protectalux T -
Stainless Steel**



**Enduralux T -
Low Glare**



Workshops and Sports Halls

For indoor recreation and skills development this range provides high quality impact-resistant luminaires that require minimal maintenance.

Workshops Recommended Fittings



Enduralux T



Protectalux Low Profile

Sports Halls Recommended Fittings



Sirius High Bay



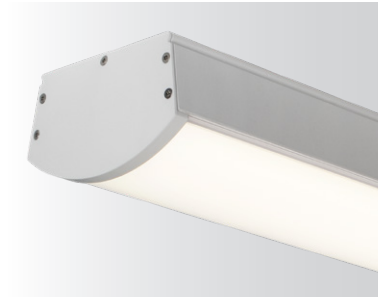
Capri

Healthcare



Lighting in a custodial healthcare environment needs to be robust for all the reasons in other areas of the prison but also aid with recuperation and enable clinicians to be able to carry out examinations and tasks as they would in a normal hospital environment, 200 lux is generally recommended with 325 lux for task lighting, the pharmacy, dental surgery, consulting and examination rooms.

Recommended Fittings



Resistalux Surface



Protectalux Recessed Anti-Lig



Como Anti-Ligature



Iris Anti-Ligature

Ancillary and Non-Custody Areas



Lighting in other areas is equally important, and requires the following considerations:

Offices	Plant rooms & other back of house areas (especially in emergency mode)
• Good quality uniform lux levels	• Minimum maintenance
• Low glare (UGR<19)	• IP ratings
• Reduced maintenance	• Elevated and low temperatures

Offices and other staff areas require good lighting to assist with daily tasks and the well-being of all those employed across the site.

Recommended Fittings



Lucca Surface and Suspended Range



Asti Recessed Panels



Infiniti



Como Downlight Range



Iris Standard



Non-Corrosive Range



School



Batten

Exterior

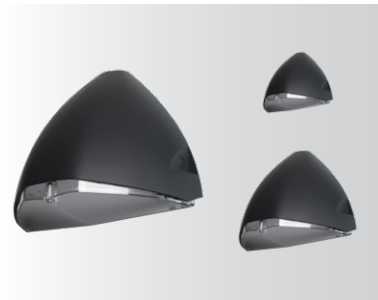


Lighting in exterior applications requires the following considerations:

Exterior areas	
• IP rating	• Minimum maintenance
• Vandal resistance	• UV exposure
• Good optical control to save energy	• Elevated and low temperatures

Exterior lighting is required for the movement and safety of staff and detainees, different prison categories require different lux levels at night.

Recommended Fittings



OWL Range



Roof Light



Iris Exterior



Iris Hood



Protectalux T Bulkhead



Como Medium Surface



Post Top / Flood Light



Bollard

Emergency Lighting



Emergency lighting in custodial settings has higher requirements than usual. All emergency exit routes should be to a minimum of 3 lux (up to 2mt in width) and locked doors/gates should be lit to a minimum of 15 lux vertically. All other areas intended for use by prisoners should be provided with a horizontal illuminance not less than 1 lux on the floor.

Other areas that need to be 15 lux include wing offices and rooms or areas for tasks that are deemed to be high risk. For court custody areas all rooms and cells should be lit to 15 lux in emergency directly below the luminaire.

All of our luminaires come with the option of integral maintained emergency and many have the ability to have a high-output emergency output where required to meet the higher levels needed in the custodial setting, this negates the need for extra emergency fittings.

We can also provide standalone units as integral non-maintained or slave fittings for where a central battery is utilised.

Recommended Fittings



Guardian Bulkhead



Guardian Exit Box



Guardian Double-Sided Exit Sign



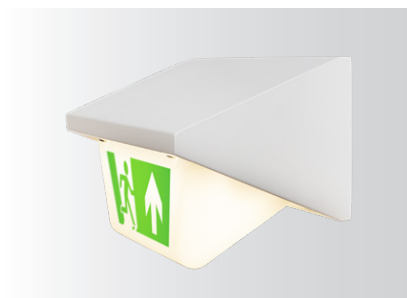
Guardian Over-Door



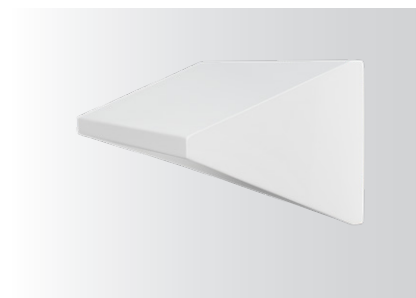
Guardian Round Anti-Ligature



Guardian Recessed Anti-Ligature



Guardian Over-Door Exit Sign



Guardian Exterior

WAY AHEAD

LIGHTING CONTROLS

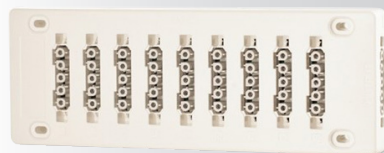
Lighting controls are being increasingly used in custodial settings as a way of saving energy and reducing maintenance costs.

We provide simple daylight dimming, PIRs or integrally fitted microwave sensors for presence or absence detection, all the way through to full DALI or wireless controls and emergency monitoring systems. Please ask us about our Way Ahead lighting control systems.

We also provide a dynamic lighting solution with the ground-breaking MelaGen system that can assist in resetting circadian rhythms and promoting good quality sleep. They can enhance vision, improve health, safety, performance, and well-being in the workplace.



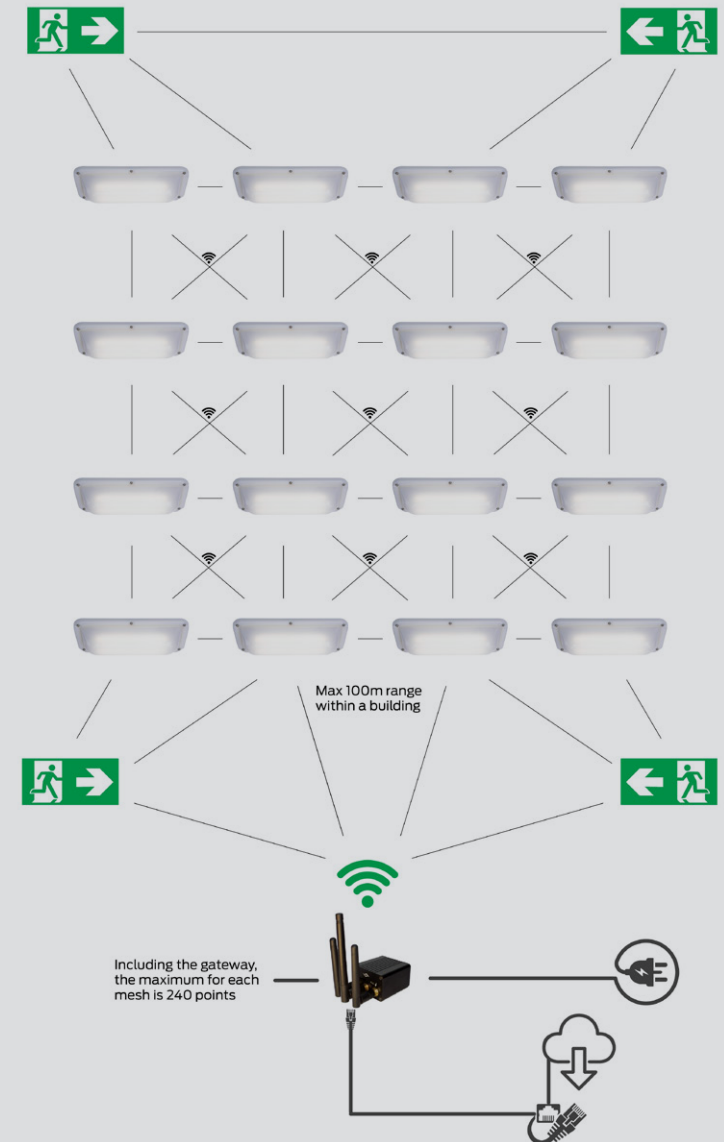
Products



Way Ahead Connect



Way Ahead Sense



Way Ahead Mesh

Re:Light & Contribute to the Circular Economy

In the event of product failure, to reduce costly maintenance or to make energy savings you may wish to consider a retrofit of your gear trays to re-purpose over replacing. There are many reasons to choose this option, not least the reduction in the number of required escorts to move service users, time on site to complete the work and damage limitation to existing structures.

In a world and at a time where resources are becoming more precious and amidst rising energy costs, retrofitting contributes to the circular economy and cleaner production, greater length of product service, reduction in product whole life costs, management of product end of life and recycling.

LYA's retrofit gear trays and housings are designed to be accommodated in the current architecture and comply to latest legislation. They are made to meticulous standards and are built to last.

Not only will converting existing lighting architecture to LED technology save on energy expense, it will soon be prohibited to place fluorescent lamps on the market for sale.

Get ahead of the ban and Re:Light, before it's too late.



Fluorescent lamps
in ring form (T5, T9)



Compact fluorescent lamps
with plug-in base (CFLni)



Fluorescent lamps
(T5, T8)



Halogen pins
(G4, GY6.35, G9)



Re:LIGHT
for the YEARS **AHEAD**



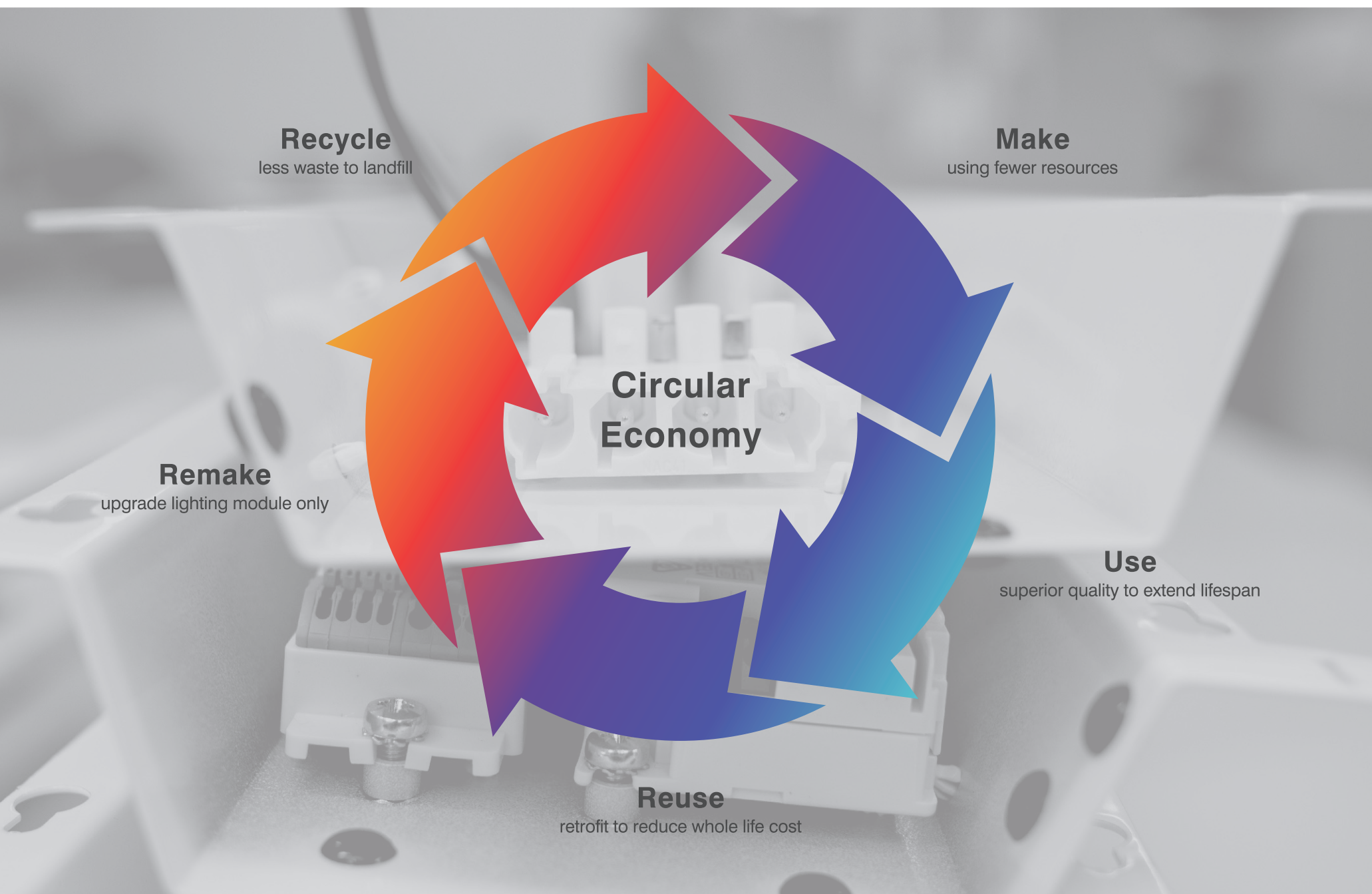
Retrofit tray for clear lens



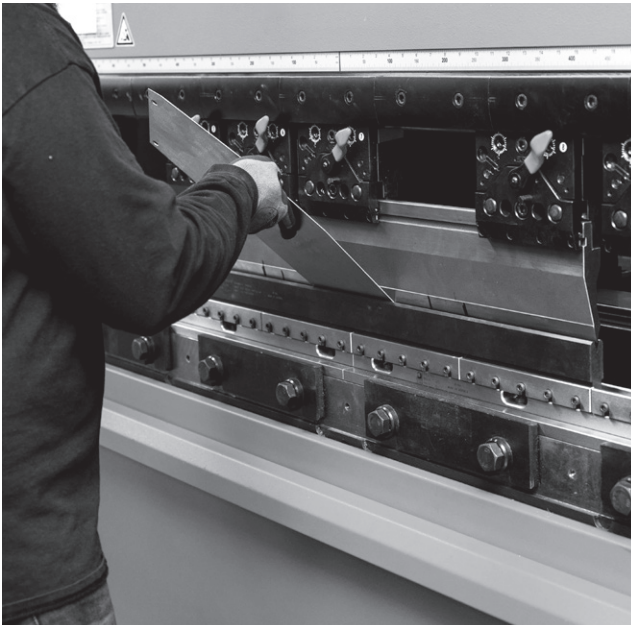
Retrofit tray for opal lens

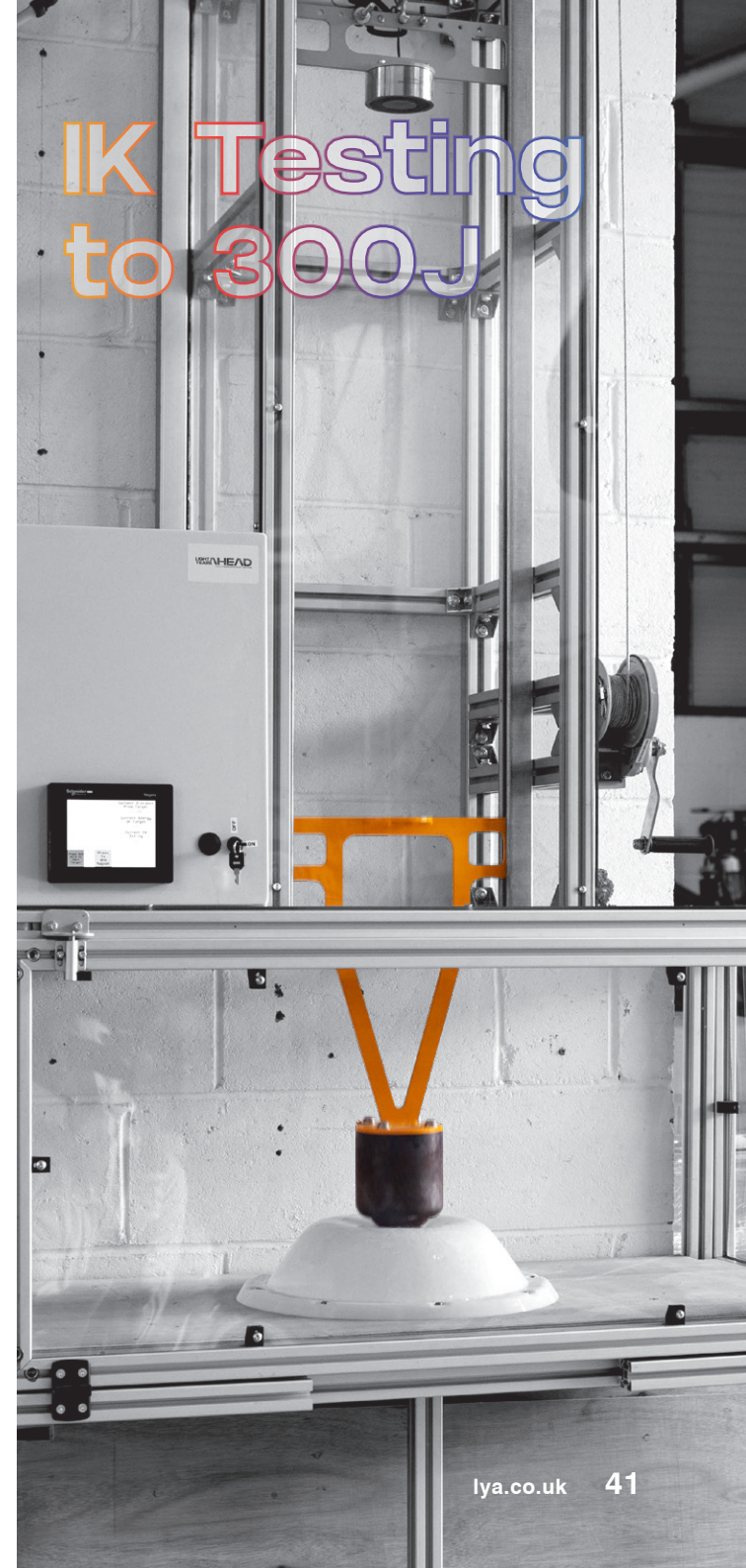


Retrofit tray and new opal lens



In-House Manufacture





IK Testing to 300J

Lighting Designs/Site Surveys



We can assist you with your lighting design, from individual rooms through to site-wide schemes. Be assured that we focus on delivering a solution that is designed to meet your objectives.

Having the appropriate lighting solutions for your environment is critical to safety, rehabilitation and well-being for service users and staff. During projects needs may change therefore, working with a trusted and agile solution provider will give you peace of mind and the results you need for your project.

Our experts will guide you to consider the best lighting for you to create the required environment and ambience. To do this we consider the lighting needs of specific areas according to the task being performed, the necessary positioning of the luminaire, light distribution, glare and the colour temperature of the lamp from warm white to daylight.

We are also able to attend site to survey and assist with design or to look at refurbishment and retrofit requirements. We will always look to reuse existing luminaire housings and positions where it is appropriate to save installation and capital cost.



Robust British design,
development,
fabrication and product
assembly services.
Based on strong
foundations of many
decades of expertise.

LIGHT YEARS AHEAD



+44 (0) 1787 881191

info@lya.co.uk

lya.co.uk

Church Field Road, Sudbury, Suffolk CO10 2YA

Light Years Ahead is a company registered in England & Wales
registration number 10722911