

**Lighting designed for  
where it matters most**

# Lighting you can trust. Expertise you can rely on.

Since 1997, Light Years Ahead has been designing and manufacturing lighting that supports safety, durability and wellbeing in demanding environments. From our dedicated facility in Suffolk, we combine British manufacturing excellence with deep sector knowledge to deliver products that meet the highest standards for safety, durability and performance. With over 25 years of industry experience, we've built a reputation for products that perform under pressure.

We believe that lighting can do more than illuminate. It can help create safer environments, support care, and reduce maintenance and energy demands without sacrificing quality or design integrity.

We work closely with architects, consultants, estates teams and contractors to ensure every luminaire is fit for purpose — and designed to support both people and performance in the spaces it serves.



**Designed, tested and built in Britain.**  
**Engineered for safer environments.**

# Why choose Light Years Ahead for your project?

---

From initial design through to installation, our products are created to perform and to last.

## **Tested for performance**

Every luminaire undergoes rigorous in-house and independent testing for anti-ligature performance, impact resistance (IK ratings up to 250 joules), and ingress protection (IP ratings up to IP66).

## **British made**

Our products are designed, manufactured and tested in the UK. That means shorter lead times, better quality control and friendly support from people who understand your sector.

## **Sector expertise**

Proven in mental healthcare, custodial, transport, infrastructure and high-risk environments.

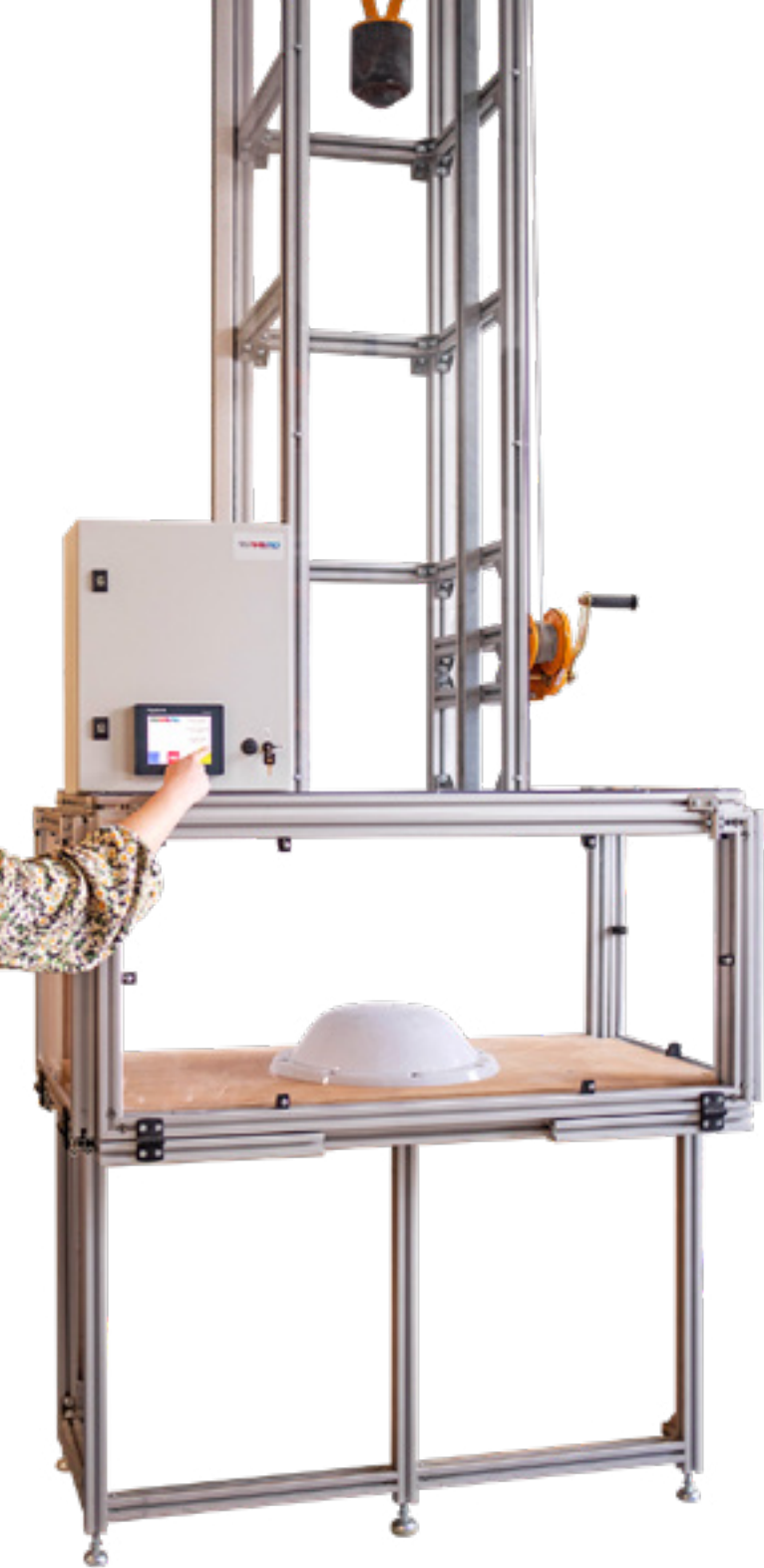
## **Technical support**

From early specification advice to installation guidance, we're with you every step of the way.

## **Proven track record**

Experience delivering projects for clients including the Ministry of Justice, NHS, leading architectural practices, major contractors and infrastructure providers.





# Our Testing Standards

---

Performance proven in the lab and the field. Every Light Years Ahead product is tested to ensure it meets (and often exceeds) the standards required for its setting.

## **Anti-Ligature Testing**

Our products have been extensively tested, assessed and classified according to varying levels of risk. We test both design and construction, ensuring fittings can withstand persistent tampering while minimising anchor potential.

## **Impact Resistance**

IK ratings classify a product's ability to withstand mechanical impact. Many of our luminaires are tested beyond the standard IK11 level reaching up to IK22, giving specifiers added confidence for secure areas.

## **Ingress Protection (IP Ratings)**

Sealed to prevent dust and water ingress, with ratings up to IP66 for the most exposed environments. At Light Years Ahead, our luminaires are independently tested to international standards.

## **MoJ Approved**

As a leading specialist designer and manufacturer of fully compliant Ministry of Justice custodial lighting, our custodial products are rigorously and independently tested to MoJ standards.

In demanding environments, lighting cannot afford to fail. That's why every product we design is tested, not only for performance, but for resilience and durability ensuring compliance and peace of mind.



# Sustainability

Our lighting is built to perform over time, both in safety and in sustainability. We prioritise low-energy LED technology and long life cycles to reduce environmental impact and running costs. For organisations under pressure to meet energy targets, our luminaires deliver measurable savings without compromising resilience. Our Re:light retrofitting scheme is designed to give new life to existing lighting, avoiding unnecessary waste and offering energy savings. By upgrading lighting with LED technology, we help our clients reduce their carbon footprint.

Our LED luminaires are engineered for exceptional lifespan (typically 60,000+ hours) meaning few replacements, less waste and significantly lower resource use over time. We're proud to design, manufacture and test in the UK. That means shorter lead times, better quality control and friendly support from our team who understand your sector. We work in accordance to BS EN ISO 14001 to ensure compliance with environmental regulations, improve resource efficiency, reduce waste and minimise environmental impact.

Most of our retrofits and LED products comply fully with Part L of the UK Building Regulations. That means optimised energy performance, adherence to building standards and support in achieving environmental certifications and net-zero goals.



# Case Studies

Real-world examples of how our British-made luminaires perform in mental healthcare, custodial, transport and high-use public environments.

## Nuffield Hospital



An ageing hospital lighting system consisting of fluorescent tubes was energy-intensive, costly in maintenance, and incompatible with emerging regulations phasing out fluorescent lighting. We deployed our retrofit solution, a smart upgrade designed for fast, cost-effective conversion. The system fit existing battens, requiring minimal installation effort via retrofit gear trays and LED mounting plates, enabling reuse of existing fixtures.

This resulted in reduced energy use, thanks to highly efficient LED components, substantially lower maintenance and regulatory compliance achieved.

## Norton Street



As part of the transformation of the Norton Street arches in Salford, our team was proud to support the project by supplying external lighting from our OWL range. The regeneration, focused on bringing previously disused railway arches back into use for retail, leisure and hospitality.

We supplied lighting to support a warm, welcoming and functional streetscape. With a robust IP65 rating for external conditions and an IK11 rating accompanied with an anti-vandal diffuser and tamper proof fixings, our external luminaires are designed to support demanding outdoor environments.

# Northwick Park



## **Project: Northwick Park Hospital Mental Health Ward, London, NHS**

Northwick Park Hospital's Mental Health Ward recently underwent a significant LED lighting upgrade to reduce energy consumption while delivering brighter, clearer illumination for staff and service users.

We supplied a full package of anti-ligature, anti-tamper and anti-vandal luminaires, including the Readalux Bedhead, Como Anti-Ligature Downlights and the Iris Anti-Ligature Bulkhead. In total, more than 1,000 luminaires were installed across corridors, patient areas and bedrooms.

The transformation has received extremely positive feedback from staff across the ward, with noticeable improvements in brightness, atmosphere and overall visibility.

Jason Shill, Site Manager, commented: "We don't get a lot of natural light and, to me, it's really improved the area and made it a lot brighter. I'm exceptionally happy – it's improved immensely. The previous lights were more amber-looking and less bright. It does make a difference."

Jason also noted that the upgrade has improved brightness and visibility in the corridors, while reducing glare and flicker rates, contributing to a calmer and safer environment for both staff and patients.

Semirat Mtayeeb, Ward Administrator (Ellington Ward), added: "It's been an amazing transformation. It's much clearer and it feels so much better in this space."

The lighting upgrade has completely transformed the look and feel of the ward. The improved clarity creates a more therapeutic environment, while the fittings' secure design ensures long-term durability and compliance with mental healthcare safety standards.

# Retrofit your lighting.

---

## **Future-proof lighting without the cost of full replacement.**

Keeping lighting efficient and complaint doesn't always mean starting from scratch. We design and manufacture retrofit lighting solutions that combine safety, efficiency and durability.

Retrofitting offers a smarter alternative. By reusing and upgrading existing fittings, we extend product life, reduce environmental impact, and deliver significant cost savings, allowing organisations to upgrade existing lighting without the disruption or cost of a full redesign.

Our retrofit service makes your existing lighting work harder and last longer. From simple like-for-like retrofits to full-service upgrades with new optics, diffusers and lenses, we provide solutions tailored to your site.

By replacing outdated fittings with modern, energy-efficient and safety-tested LED luminaires, you can:

- Reduce energy consumption and running costs
- Improve lighting quality and reliability
- Extend the life of existing infrastructure
- Meet current compliance and safety standards
- Support sustainability goals through reuse and circular economy practices

Where possible, we recycle components to reduce waste and environmental impact. Every retrofit comes with an 8-year warranty, ensuring peace of mind and long-term value.







## Better sleep, calmer days and brighter care

MelaGen® is our circadian rhythm lighting solution, developed by Versalux, to help people feel more awake during the day and rest easier at night. By adjusting blue light exposure automatically across the day, MelaGen® lighting supports healthier sleep cycles, improves moods and encourages calmer environments for both service users and staff.

Unlike tunable white lighting that only shifts between warm and cool tones, MelaGen® is engineered to optimise the Melanopic/Photopic (M/P) ratio. This ratio measures how light affects both visual and non-visual receptors in the eye. By targeting this balance, MelaGen® supports melatonin regulation, which is essential for stable sleep and daytime focus, providing real biological benefits rather than just tunable visual changes in ambience.

MelaGen® lighting changes automatically over the day. In the morning and through the afternoon, it emits a brighter, blue-enriched light that helps people feel awake and focused. In the evening, it softens to a warmer tone with low blue content, calming the body and encouraging sleep. Crucially, this happens automatically, with no need for staff to adjust settings.

### Human-centric lighting

#### Primary focus

The control and/or regulation of colour temperature (purely aesthetic)

Mimics the changing colour temperature of daylight. (Non-visible blue light is still present)

Limited influence on melatonin levels

Limited impact upon alertness and sleep



#### Primary focus

The control and/or regulation of light frequencies whilst maintaining a 91.4CRI

Blue-enriched light enhances alertness and emotional wellbeing during the day.

Blue-depleted light supports melatonin production which improves sleep quality when used in the evening.

# Bestselling products

Discover how we can support your next project. Get in touch for our full product brochure or technical specification sheets: [info@lightyearsahead.co.uk](mailto:info@lightyearsahead.co.uk)



## Lucca

The Lucca Anti-Ligature combines strength and style, delivering IK20 impact resistance with a sleek, tamper-proof design.

Engineered for secure environments, it offers flexible LED modes, superior light quality and long-lasting performance where safety and peace of mind matters most.



## Como

The Como Anti-Ligature Downlight combines discreet, tamper-proof safety with a clean recessed design.

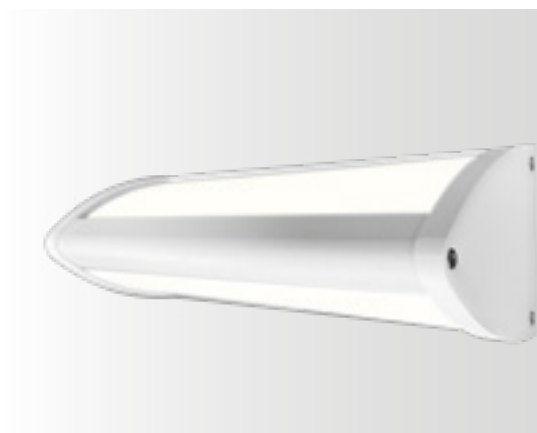
With IK14 and IP65 ratings, it delivers reliable performance and flexible sizing, making it the ideal choice for secure and mental health environments.



## Resistalux Cornice Slim

The Resistalux Cornice Slim is built to withstand the toughest environments with a tough IK16 and IP54 rating. Designed to minimise ligature risks, its smooth profile avoids viable ledges for tampering or levering.

Its high-performance LED system delivers energy-efficient lighting. Sleek, robust and designed for total peace of mind.



## Resistalux Bedhead

The Resistalux Bedhead offers a slim, smooth profile designed to minimise ligature risks and resist vandalism.

With IK16 and IP54 ratings, it provides upward, downward or combined lighting options, including MelaGen and RGB output. A safe, durable and versatile choice for demanding environments.

# Lighting that's Light Years Ahead

Lighting should support safety, improve wellbeing and work reliably for years to come. That's why we combine our manufacturing expertise with innovations like MelaGen, circadian-supportive technology, designed to promote healthier sleep cycles and calmer daytime behaviour.

Every project starts with collaboration. We work closely with architects, contractors, consultants and estates teams to deliver lighting that meets strict compliance requirements, performs in challenging environments, and supports the people who use it. From anti-ligature designs and high-impact resistance to energy efficiency and retrofit solutions, our luminaires are engineered to perform where it matters most.

When you choose Light Years Ahead, you're choosing British-made quality, proven performance and a partner committed to helping you achieve the best possible outcome for your project.

**Let's talk about your next project.**

**Contact us:**

+44 (0) 1787 881191

[info@lightyearsahead.co.uk](mailto:info@lightyearsahead.co.uk)

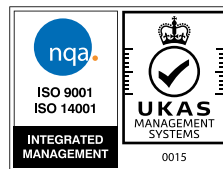
[lightyearsahead.co.uk](http://lightyearsahead.co.uk)

Church Field Road, Sudbury, Suffolk, CO10 2YA





# LIGHT YEARS AHEAD



+44 (0) 1787 881191

[info@lightyearsahead.co.uk](mailto:info@lightyearsahead.co.uk)

**[lightyearsahead.co.uk](http://lightyearsahead.co.uk)**

Church Field Road, Sudbury, Suffolk CO10 2YA

Light Years Ahead is a company registered in England & Wales  
registration number 10722911