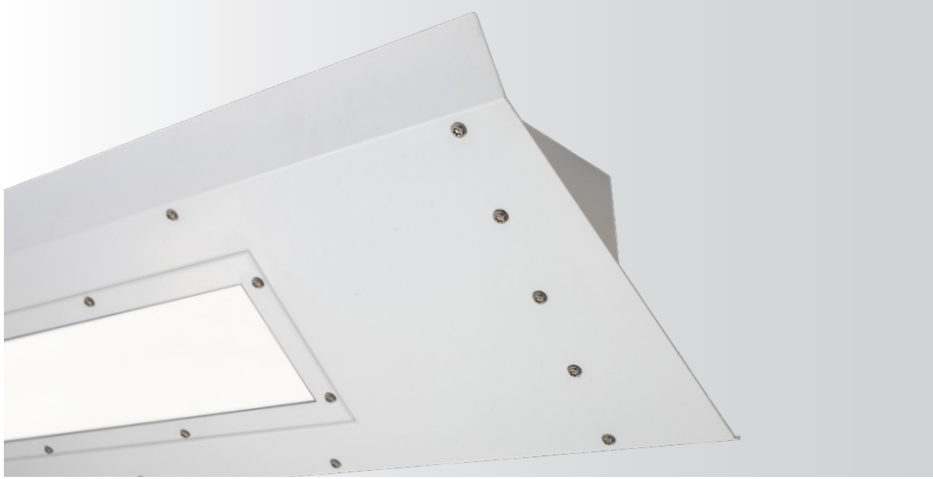


# Protectalux® X Cornice

Safer Cell Luminaire System

## Product Specification



HIGH RISK



MENTAL HEALTH



CUSTODIAL



INFRASTRUCTURE



## Features & Benefits

- Ministry of Justice (MoJ) approved anti-ligature vandal-resistant luminaire suitable for safer cell accommodation
- LED versions on MoJ list of approved products tested in accordance with STD/E/SPEC/022
- Anti-vandal IK16 (150J) 10mm polycarbonate lens secured by tamper-proof Resistorx security screws
- 2mm mild steel powder coated lens frame and lid
- Removable gear tray and LED engine plate
- Mains lighting on two separate circuits allowing for low, medium and high output levels. Separate night light. Efficacy over 100 lm/W
- Bespoke blank end sections available to provide continuous system including provision for CCTV and smoke detectors
- Three compartment cableway

**LED retrofit kit available for existing T5 luminaires**



Designed and  
Manufactured  
in the UK



+44 (0)1787 881191  
info@lightyearsahead.co.uk

**lightyearsahead.co.uk**

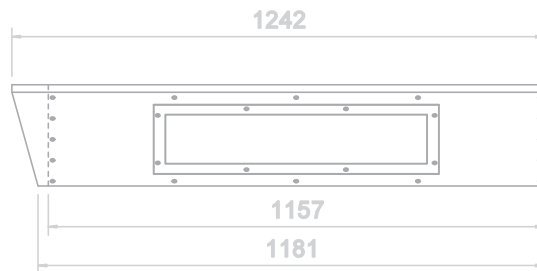
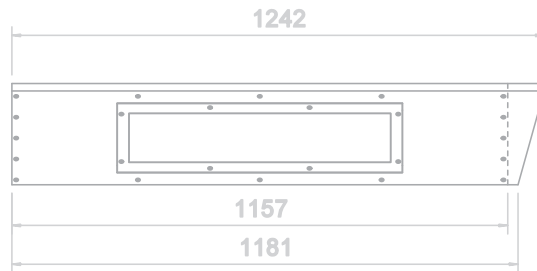
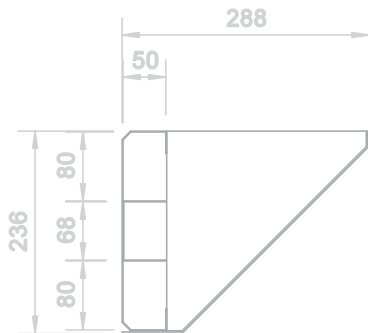
Church Field Road, Sudbury, Suffolk CO10 2YA

**LIGHT YEARS AHEAD**

# Protectalux® X Cornice

## Safer Cell Luminaire System

### Product Dimensions



### Lighting Data

Product Code	Length (mm)	CRI	Colour Temp	Lumens (lm)	Wattage (W)	lm/W	Weight (kg)
CRNX-1795-SW-3K-NL	1795	>80	3000K	3157	30	105	30
CRNX-1157-L0-3K-LH	1157	>80	3000K	1062	10	100	20
CRNX-1157-L0-3K-RH	1157	>80	3000K	1062	10	106	20

### Optional Extras

Additional options are available. Please contact us for more information.

-EP	Integral emergency	-EPD	Integral DALI emergency	-MW	Microwave sensor
-EPS	Integral self-test emergency	-DA	DALI		

For additional details on this or any other lighting products and solutions in the Light Years Ahead portfolio, please contact our expert team.

+44 (0)1787 881191  
[info@lightyearsahead.co.uk](mailto:info@lightyearsahead.co.uk)  
[lightyearsahead.co.uk](http://lightyearsahead.co.uk)

Church Field Road, Sudbury, Suffolk CO10 2YA

**LIGHT YEARS AHEAD**